



Carriage Grove, Bootle

£675 PCM

Ascend are pleased to offer for rent this modern two bedroom apartment.

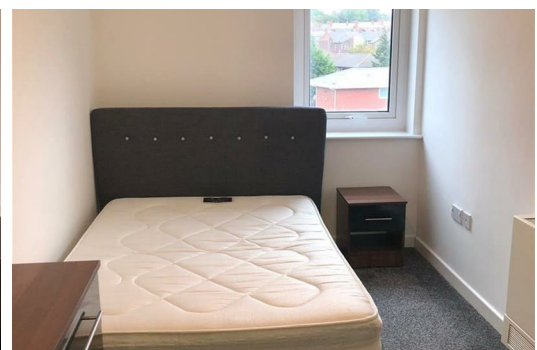
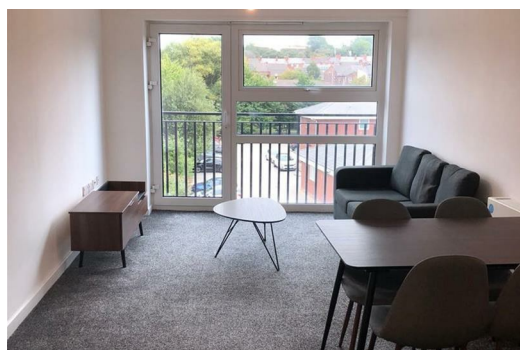
A magnificent 2 bedroom newly renovated Apartment in a wonderful location, situated in Liverpool L20, offering amazing comfortable living and convenience with simplicity.

The Apartment is presented in outstanding condition and fitted with all the basic facilities like: Close to public transport, Communal Garden, Double glazing, Fitted Kitchen, Fully furnished to high spec, Intercom entry system.

Bills are not included in rental price.

Images are for marketing purposes only*

Available 3rd November 2023



36B Wishing Well Carriage Grove, Bootle, Merseyside, L20 3JF



Energy Efficiency Rating			Environmental Impact (CO ₂) Rating		
Score	Band	Band	Score	Band	Band
84	A	A	84	A	A
82	B	B	82	B	B
80	C	C	80	C	C
78	D	D	78	D	D
76	E	E	76	E	E
74	F	F	74	F	F
72	G	G	72	G	G